



*Site Specific Mapping for 21<sup>st</sup>  
Century Agriculture*

*Rx-VRT Providers, LLC*

**Aberdeen, S.D.**

- *Servicing over 100,000 acres in the Dakotas and Minnesota since 1998.*



- *Kim Retzlaff, founder of **Rx-VRT Providers, LLC** has over 25 years of independent crop consulting experience.*
- *Kim has been working with site specific techniques since the early 90's*



- *Prescription Variable Rate Technology (Rx-VRT) is one of the most significant recent advancements in agriculture.*
- *Rx-VRT improves the economic return to farmers.*



- *Are you concerned about the high cost of fertilizer?*
- *Are you putting the right amounts of fertilizer and seed in the right areas?*



- *Are your soil nutrients becoming depleted in your high producing areas?*
- *Do you want to maximize your returns from the better producing areas?*



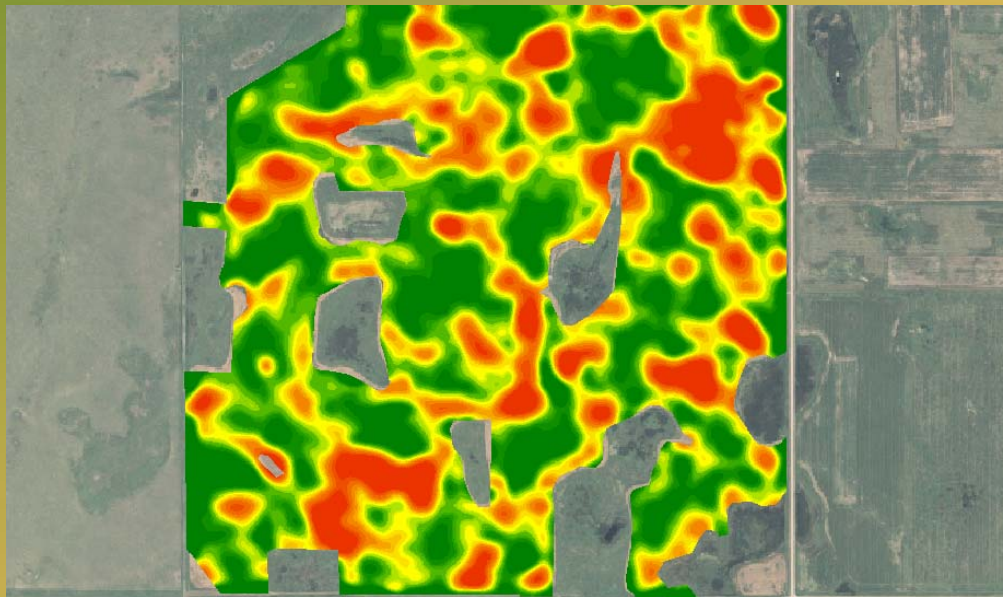
- These questions and more can be answered with the *Rx-VRT program*.



## 1) VRT Map Creation & Verification :

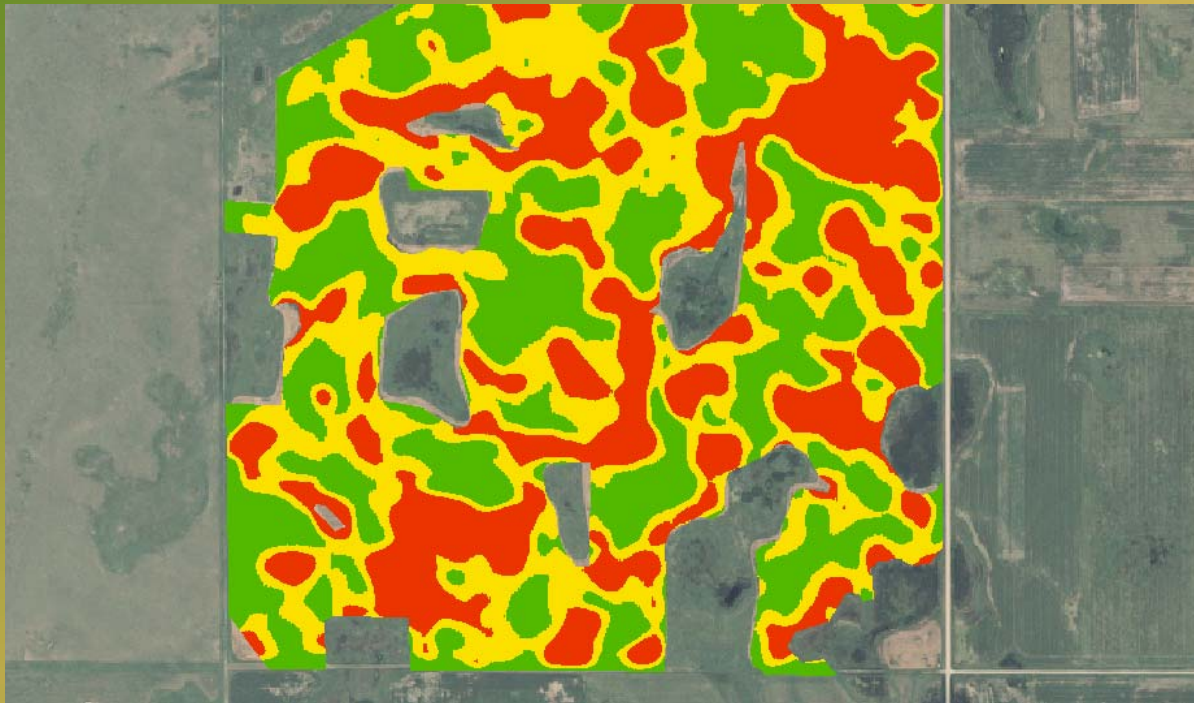
*The most important part of any Precision Variable Rate Program is to create accurate quality maps.*

*We will analyze many different maps for our extensive vegetative map library to provide the best possible map for each field.*



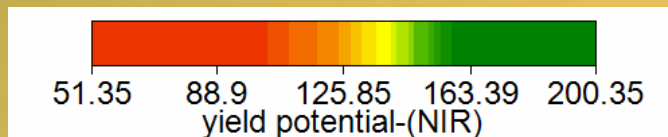
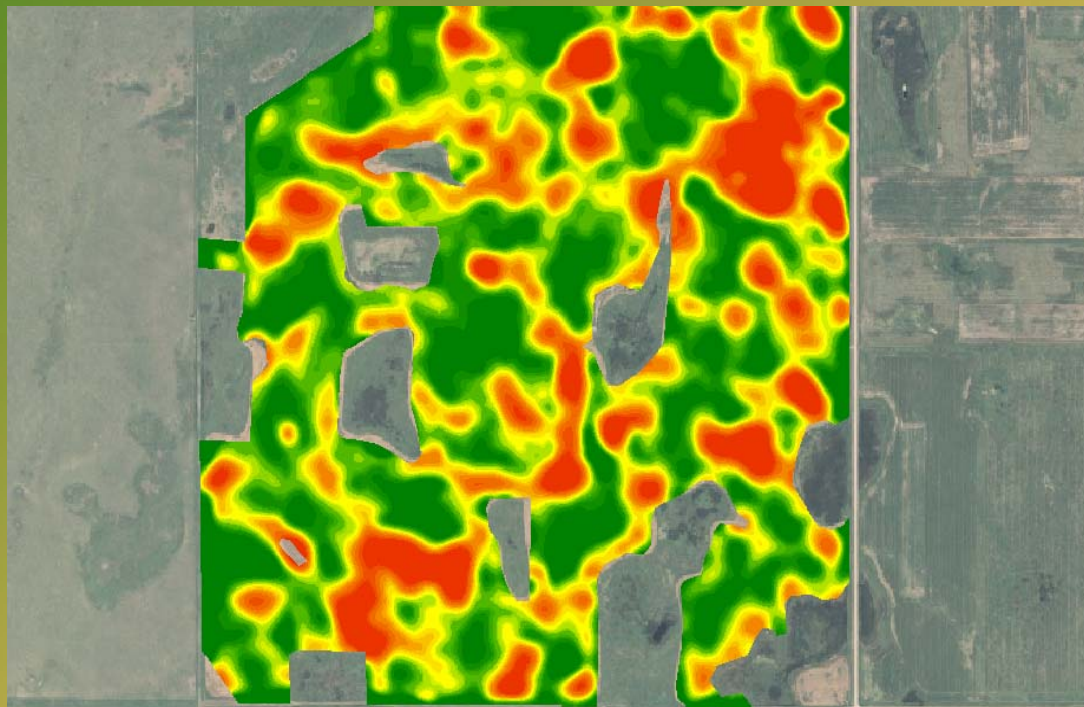
## 2) Precision Soil Sampling:

*A precision sampling map is created, typically using 3-4 zones, to determine fertilizer needs. Sample points are GPS logged for sampling in future years and to track nutrient changes.*



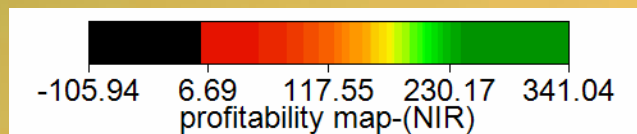
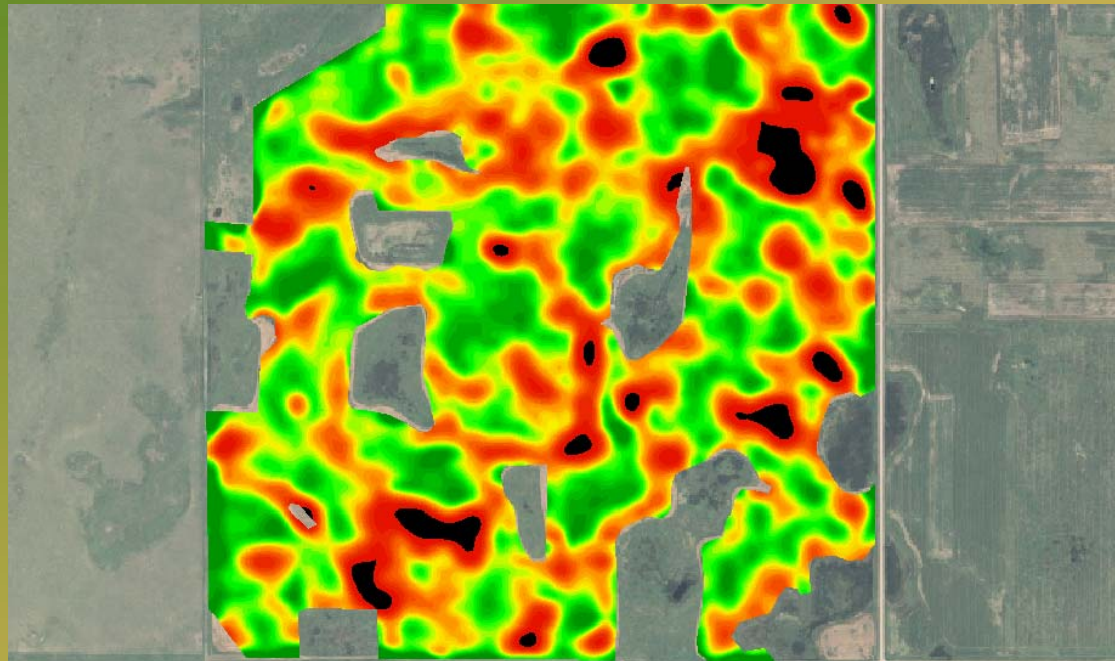
### 3) Rx Maps :

*A Yield Potential Map is generated from an average yield goal for the field.*

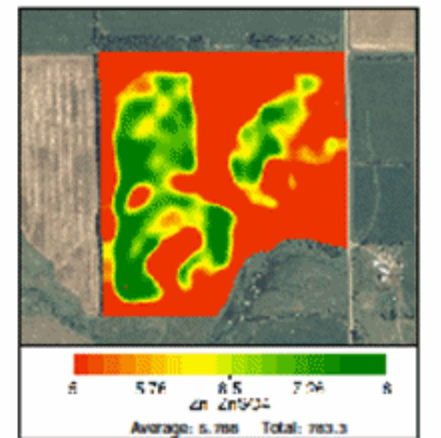
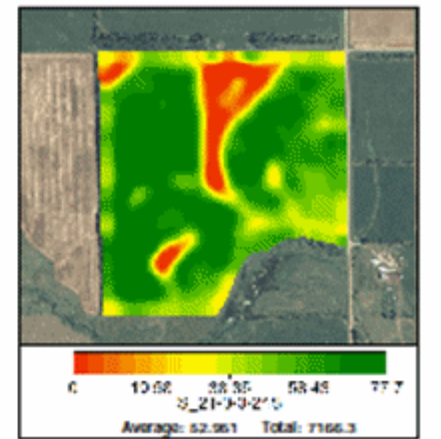
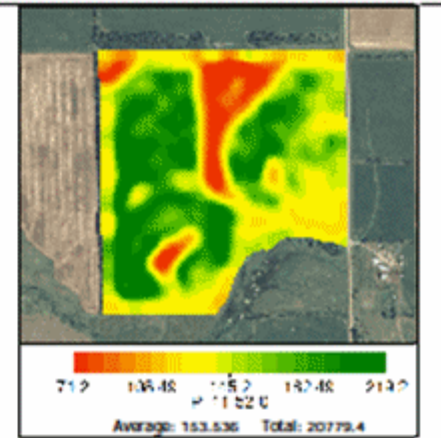
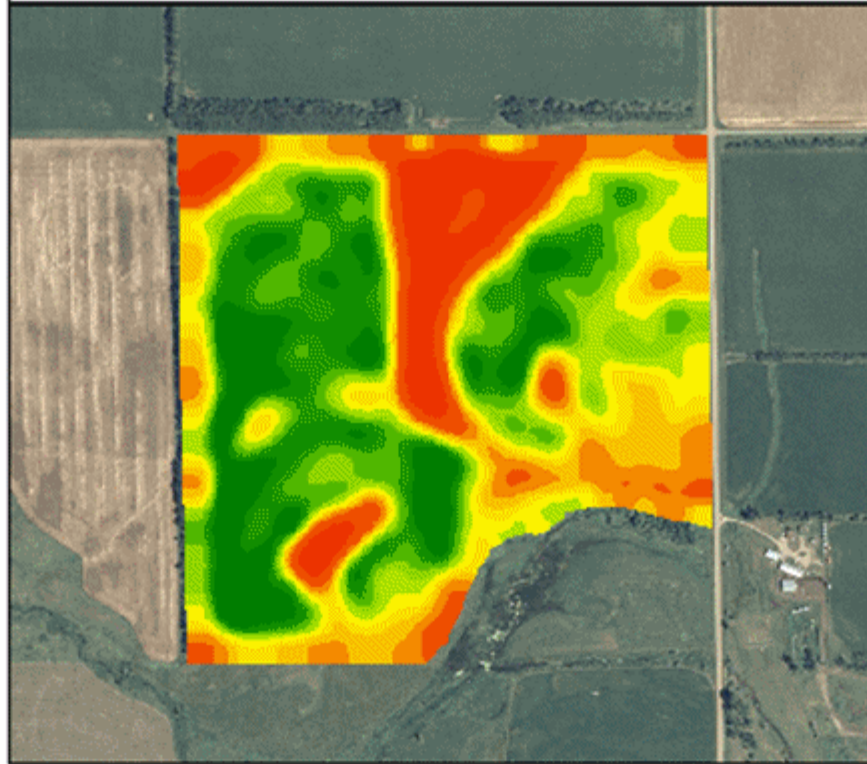
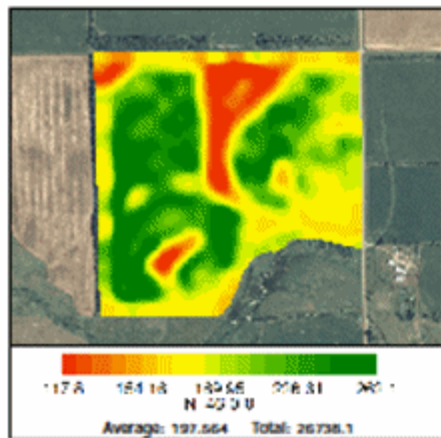
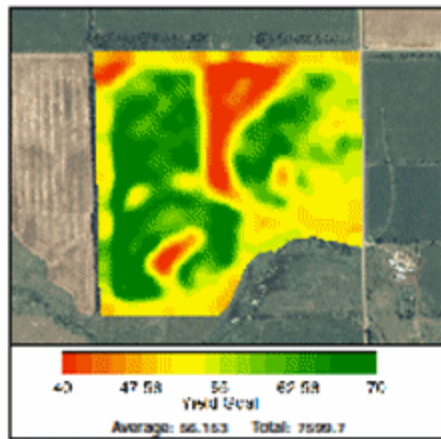
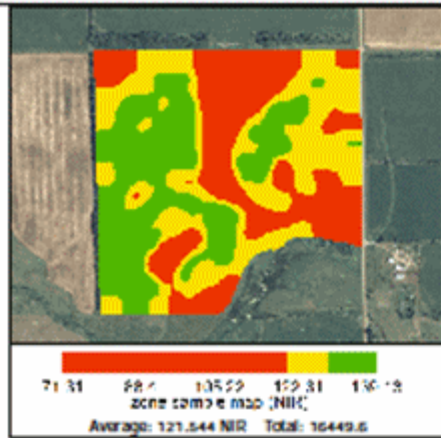


## 4) : Profitability Map

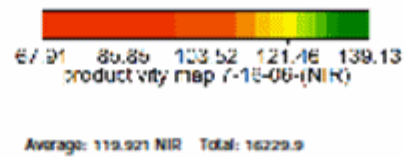
*This is the most important of all data, showing the final result.*



# Rx-VRT Providers - 2008



Notes:



Client: Applied Agronomics  
Farm: Joe Farmer  
Field: AS29-NE



- *Rx-VRT Pricing*

Year 1 = \$11.00/acre

Year 2 = \$5.00/acre

Year 3 = \$5.00/acre

\$21.00/acre total / 3 years =

*\$7.00/acre/year*



## Projected 2010 Input costs :

140# nitrogen at \$.30/#	=	\$42/acre
60# phosphorus at \$.42/#	=	\$25/acre
Misc. fertilizer (Sulfur, Zn, K)	=	\$20/acre
Corn seed	=	<u>\$80/acre</u>
Total =		\$167/acre



***Rx-VRT Providers, LLC** develops  
quality variable rate maps at a  
reasonable price!*



*Thank You!*

