

Rx-VRT Pricing

1st Year = \$11/Acre

- includes VR Map Setup
- VR Soil Sampling
- VR Fertilizer Rx

Following Years = \$5/Acre

- VR Sampling
- VR Fertilizer Rx

Additional Services

- VR Plant Population Rx \$2/Acre
- Split Variety Soybean Rx \$2/Acre
- Yield Map Processing \$1/Acre
- Veris Soil Mapping \$8/Acre

Example: 144 acre field

Year 1 = **\$11.00/acre**

Year 2 = **\$5.00/acre**

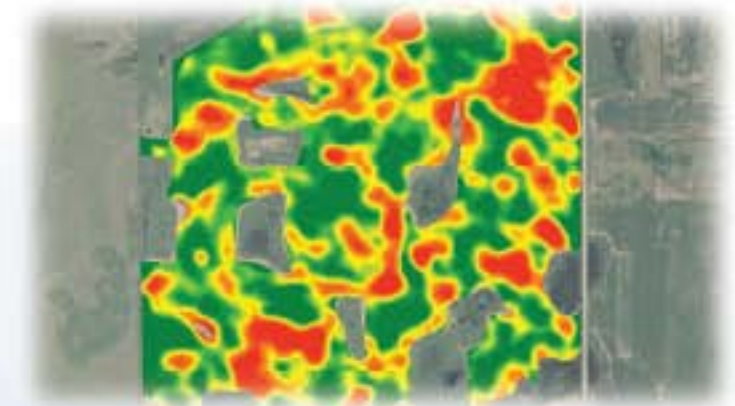
Year 3 = **\$5.00/acre**

Total **\$21.00/acre**

= **\$7.00/acre/year**



VR Mapping for the 21st Century



*Providing Solutions for
Precision Farming since 1995*



Developing quality Variable Rate maps at a reasonable price.

1) Map Creation & Verification

The most important part of any Precision Variable Rate Program is to create accurate, quality maps. **Rx-VRT Providers** will analyze many different maps in the field from their extensive satellite imagery library to provide the best possible map for your variable rate program.

2) Zone Soil Sampling

Next, a zone sampling map is created, typically using 3-5 zones, to determine fertilizer needs. Sample points are GPS logged for sampling in future years and to track nutrient levels.

3) Variable Rate Recommendations

Finally, a trained GIS precision agronomist will consult with you to develop a customized variable rate fertilizer and/or seed program to fit your soil productivity potential.

Are you putting the proper amounts of these inputs in the right areas of your fields?

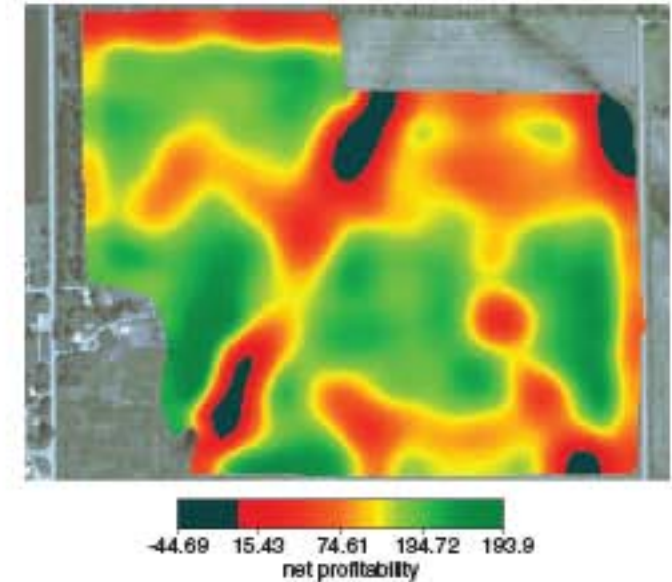
Are your soil nutrients limiting your better producing areas?

Are you concerned about the high cost of fertilizer and seed?

Are you over fertilizing in your low producing areas?

Should you be planting more seed corn in your higher producing areas and less in the poor soils?

These questions and more can be answered with a Variable Rate program from **Rx-VRT Providers**.



*Servicing over 100,000
acres in the Upper Midwest*



*“Precision Variable Rate Farming is one of the most significant recent advancements in farming technology. **Rx-VRT Providers** helps to improve the economic return to farmers.”*

*Let **Rx-VRT Providers** develop your Precision Variable Rate Program using sound agronomic knowledge, principles and experience.*